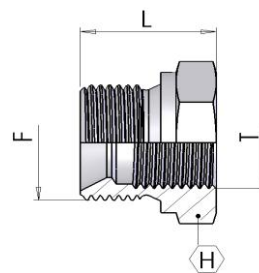


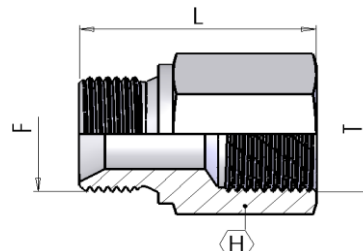
## 670 Riduzione Corta maschio/femm.

Disponibile con maschio svasato 60° o versione conica (671)



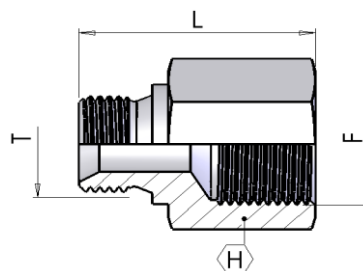
part number	Ø tube		Dimensions			
	mm	inch	F	T	L	H
670RMFTT-02-04	6	1/4"	1/4"-19	1/8"-28	22	19
670RMFTT-02-06	6	1/4"	3/8"-14	1/8"-28	22	22
670RMFTT-04-06	8	5/16"	3/8"-19	1/4"-19	21	22
670RMFTT-04-08	8	5/16"	1/2"-14	1/4"-19	24	27
670RMFTT-06-08	10	3/8"	1/2"-14	3/8"-19	29	27
670RMFTT-04-12	8	5/16"	3/4"-14	1/4"-19	27	32
670RMFTT-06-12	10	3/8"	3/4"-14	3/8"-19	26	32
670RMFTT-08-12	12	1/2"	3/4"-14	1/2"-14	27	32
670RMFTT-06-16	10	3/8"	1-11	3/8"-19	31	41
670RMFTT-08-16	12	1/2"	1-11	1/2"-14	30	41
670RMFTT-12-16	20	3/4"	1-11	3/4"-14	31	41
670RMFTT-12-20	20	3/4"	1.1/4-11	3/4"-14	34	50
670RMFTT-16-20	25	1"	1.1/4-11	1-11	34	50
670RMFTT-16-24	25	1"	1.1/2-11	1-11	35	55
670RMFTT-20-24	32	1.1/4"	1.1/2-11	1.1/4-11	39	55
670RMFTT-20-32	32	1.1/4"	2-11	1.1/4-11	43	70
670RMFTT-24-32	38	1.1/2"	2-11	1.1/2-11	43	70

## 680 Colonna/Prolunga M/F



part number	Ø tube		Dimensions			
	mm	inch	F	T	L	H
680PMF-04-20	8	5/16"	1/4-19	1/4-19	33	19
680PMF-04-25	8	5/16"	1/4-19	1/4-19	42	19
680PMF-04-40	8	5/16"	1/4-19	1/4-19	55	19
680PMF-06-25	10	3/8"	3/8-19	3/8-19	35	22
680PMF-06-40	10	3/8"	3/8-19	3/8-19	54	22
680PMF-06-60	10	3/8"	3/8-19	3/8-19	73	22
680PMF-08-25	12	1/2"	1/2-14	1/2-14	40	27
680PMF-08-30	12	1/2"	1/2-14	1/2-14	45	27
680PMF-08-45	12	1/2"	1/2-14	1/2-14	60	27
680PMF-08-60	12	1/2"	1/2-14	1/2-14	75	27
680PMF-12-30	20	3/4"	3/4-14	3/4-14	48	32
680PMF-12-46	20	3/4"	3/4-14	3/4-14	64	32
680PMF-12-56	20	3/4"	3/4-14	3/4-14	75	32
680PMF-16-35	25	1"	1-11	1-11	50	41
680PMF-16-70	25	1"	1-11	1-11	90	41
680PMF-20-42	32	1.1/4"	1.1/4-11	1.1/4-11	62	50

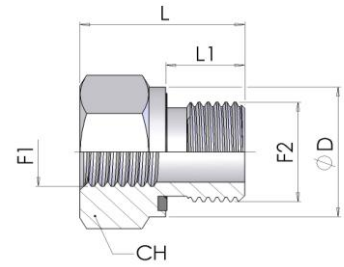
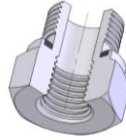
**675 Riduzione femm. - maschio (60°)**



part number	Ø tube		Dimensions			
	mm	inch	F	T	L	H
675RMFTP-02-04	8	5/16"	1/8-28	1/4-19	28	19
675RMFTP-04-02	6	1/4"	1/4-19	1/8-28	29	19
675RMFTP-04-06	10	3/8"	1/4-19	3/8-19	35	22
675RMFTP-04-08	12	1/2"	1/4-19	1/2-14	36	27
675RMFTP-06-04	8	5/16"	3/8-19	1/4-19	33	22
675RMFTP-06-08	12	1/2"	3/8-19	1/2-14	37	27
675RMFTP-08-04	8	5/16"	1/2-14	1/4-19	37	27
675RMFTP-08-06	10	3/8"	1/2-14	3/8-19	39	27
675RMFTP-08-12	20	3/4"	1/2-14	3/4-11	38	32
675RMFTP-08-16	25	1"	1/2-14	1-11	42	41
675RMFTP-12-04	8	5/16"	3/4-11	1/4-19	42	32
675RMFTP-12-06	10	3/8"	3/4-11	3/8-19	43	32
675RMFTP-12-08	12	1/2"	3/4-11	1/2-14	45	32
675RMFTP-12-16	25	1"	3/4-11	1-11	49	41
675RMFTP-16-08	12	1/2"	1-11	1/2-14	49	41
675RMFTP-16-12	20	3/4"	1-11	3/4-14	50	41
675RMFTP-16-20	20	3/4"	1-11	1.1/4-11	51	50
675RMFTP-20-12	20	3/4"	1.1/4-11	3/4-11	51	50
675RMFTP-20-16	25	1"	1.1/4-11	1-11	53	50
675RMFTP-20-24	20	3/4"	1.1/4-11	1.1/2-11	57	55
675RMFTP-24-16	25	1"	1.1/2-11	1-11	50	55
675RMFTP-24-20	20	3/4"	1.1/2-11	1.1/4-11	52	55
675RMFTP-32-20	20	3/4"	2-11	1.1/4-11	68	70
675RMDTP-32-24	38	1.1/2"	2-11	1.1/2-11	68	70

**670 Rid. Maschio-Femm. con guarn. Piana 1074..**

*Riduzione Maschio-Femmina con guarnizione piana*

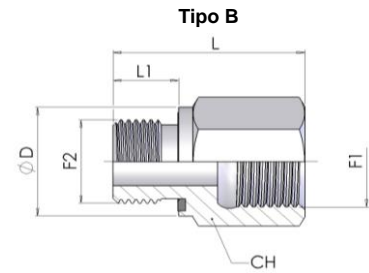
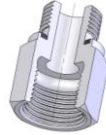


**Filettatura / Thread:**  
BSPP (Form E DIN 3852)

**Tipo A**

W.P.	part number	thread		Dimensions				Tipo
		F <sub>2</sub>	F <sub>1</sub>	L	L <sub>1</sub>	Ø D	CH	
bar								
630	670RMFTT-02-06-OR 107401	G 3/8	G 1/8	22,5	12	22	22	A
	670RMFTT-02-08-OR 107402	G 1/2	G 1/8	24	14	26	27	A
	670RMFTT-04-08-OR 107403	G 1/2	G 1/4	24	14	26	27	A
400	670RMFTT-04-12-OR 107404	G 3/4	G 1/4	26	16	32	32	A
	670RMFTT-06-12-OR 107405	G 3/4	G 3/8	26	16	32	32	A
	670RMFTT-04-16-OR 107406	G 1	G 1/4	29	18	39	41	A
	670RMFTT-06-16-OR 107407	G 1	G 3/8	29	18	39	41	A
	670RMFTT-08-16-OR 107408	G 1	G 1/2	29	18	39	41	A
250	670RMFTT-08-20-OR 107409	G 1 1/4	G 1/2	32	20	49	50	A
	670RMFTT-12-20-OR 107410	G 1 1/4	G 3/4	32	20	49	50	A
	670RMFTT-08-24-OR 107411	G 1 1/2	G 1/2	36	22	55	55	A
	670RMFTT-12-24-OR 107412	G 1 1/2	G 3/4	36	22	55	55	A
	670RMFTT-16-24-OR 107413	G 1 1/2	G 1	36	22	55	55	A

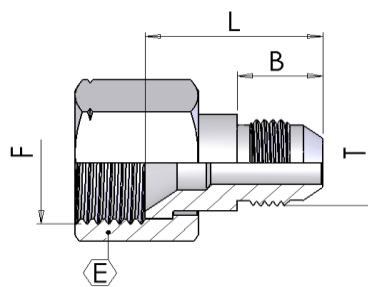
675 Rid. Maschio-Femm. con guarn. Piana 1075..



Filettatura / Thread:  
BSPB (Form E DIN 3852)

W.P.	part number	thread		Dimensions				Tipo
		F2	F1	L	L1	ØD	CH	
bar								
	675RMFTP-02-04-OR 107501	G 1/8	G 1/4	31	8	14	19	B
	675RMFTP-02-06-OR 107502	G 1/8	G 3/8	32	8	14	24	B
630	675RMFTP-04-02-OR 107503	G 1/4	G 1/8	28	12	18	19	B
	675RMFTP-04-06-OR 107504	G 1/4	G 3/8	36	12	18	24	B
	675RMFTP-04-08-OR 107505	G 1/4	G 1/2	40	12	18	30	B
400	675RMFTP-04-12-OR 107506	G 1/4	G 3/4	43	12	18	36	B
630	675RMFTP-06-04-OR 107507	G 3/8	G 1/4	36	12	22	22	B
	675RMFTP-06-08-OR 107508	G 3/8	G 1/2	41	12	22	30	B
	675RMFTP-06-12-OR 107509	G 3/8	G 3/4	44	12	22	36	B
400	675RMFTP-08-06-OR 107510	G 1/2	G 3/8	36	14	26	27	B
	675RMFTP-08-12-OR 107511	G 1/2	G 3/4	46	14	26	36	B
	675RMFTP-08-16-OR 107512	G 1/2	G 1	49	14	26	41	B
250	675RMFTP-08-20-OR 107513	G 1/2	G 1 1/4	53	14	26	55	B
400	675RMFTP-12-08-OR 107514	G 3/4	G 1/2	41	16	32	32	B
	675RMFTP-12-16-OR 107515	G 3/4	G 1	51	16	32	41	B
250	675RMFTP-12-20-OR 107516	G 3/4	G 1 1/4	55	16	32	55	B
	675RMFTP-12-24-OR 107517	G 3/4	G 1 1/2	57	16	32	60	B
400	675RMFTP-16-12-OR 107518	G 1	G 3/4	47	18	39	41	B
	675RMFTP-16-20-OR 107519	G 1	G 1 1/4	57	18	39	55	B
	675RMFTP-16-24-OR 107520	G 1	G 1 1/2	59	18	39	60	B
250	675RMFTP-20-16-OR 107521	G 1 1/4	G 1	52	20	49	50	B
	675RMFTP-20-24-OR 107522	G 1 1/4	G 1 1/2	60	20	49	60	B
	675RMFTP-24-20-OR 107523	G 1 1/2	G 1 1/4	58	22	55	55	B

**5056 Riduzione M/F Jic**



part number	Ø tube		Dimensions					
	mm	inch	F	T	B	L	E	
5056-06-04	10	3/8"	9/16" - 18	7/16" - 20	14	23	19	
5056-06-05	10	3/8"	9/16" - 18	1/2" - 20	14	23	19	
5056-08-04	12	1/2"	3/4" - 16	7/16" - 20	14	24	22	
5056-08-05	12	1/2"	3/4" - 16	1/2" - 20	14	24	22	
5056-08-06	12	1/2"	3/4" - 16	9/16" - 18	14	24	22	
5056-10-04	16	5/8"	7/8" - 14	7/16" - 20	14	25	27	
5056-10-06	16	5/8"	7/8" - 14	9/16" - 18	14	25	27	
5056-10-08	16	5/8"	7/8" - 14	3/4" - 16	17	28	27	
5056-12-04	20	3/4"	1.1/16" - 12	7/16" - 20	14	27	32	
5056-12-06	20	3/4"	1.1/16" - 12	9/16" - 18	14	27	32	
5056-12-08	20	3/4"	1.1/16" - 12	3/4" - 16	17	30	32	
5056-12-10	20	3/4"	1.1/16" - 12	7/8" - 14	19	32	32	
5056-16-10	25	1"	1.5/16" - 12	7/8" - 14	19	34	41	
5056-16-12	25	1"	1.5/16" - 12	1.1/16" - 12	22	36	41	
5056-20-12	32	1.1/4"	1.5/8" - 12	1.1/16" - 12	22	39	50	
5056-20-16	32	1.1/4"	1.5/8" - 12	1.5/16" - 12	23	40	50	
5056-24-12	38	1.1/2"	1.7/8" - 12	1.1/16" - 12	22	41	60	
5056-24-16	38	1.1/2"	1.7/8" - 12	1.5/16" - 12	23	42	60	
5056-24-20	38	1.1/2"	1.7/8" - 12	1.5/8" - 12	24	43	60	